



North Carolina Weather & Crops


July 21, 2011
Drought Management Advisory Council (DMAC) Meeting
Williamston, NC

North Carolina Weather & Crops

- Prospective Plantings
- Acreage
- Soil Moisture
- Crop Conditions/Corn Facts
- Websites of Interest
- Upcoming Release Dates

North Carolina Prospective Plantings


- Released March 31, 2011



United States Department of Agriculture
National Agricultural Statistics Service
North Carolina Field Office

News Release

Cooperating with the North Carolina Department of Agriculture and Consumer Services
PO Box 27767 - Raleigh, NC 27611 - 919-856-4354
E-mail: nrcpsa@ncagr.gov



March 31, 2011

NORTH CAROLINA FARMERS INTEND TO PLANT MORE COTTON IN 2011*

- Corn plantings are expected to total 890,000 acres in 2011, down 2% from 2010.
- Cotton growers intend to plant 750,000 acres in 2011, 36% higher than last year.
- Flue-cured tobacco growers expect to harvest 168,000 acres in 2011, up 1% from 2010.
- Burley tobacco growers expect to harvest 2,300 acres in 2011, unchanged from 2010.
- Soybean plantings, at 1.49 million acres, are expected to decrease 6% from 2010.
- Peanut growers intend to plant 81,000 acres in 2011, down 7% from the planted acreage in 2010.
- Sweet potato growers intend to plant 60,000 acres, up 5,000 acres from last year.
- Hay producers expect to cut 540,000 acres in 2011, down 3% from 2010.
- Winter wheat plantings totaled 700,000 acres, up 40% from last year.

Corn Plantings - (Thousand Acres)

Year	Plantings (Thousand Acres)
2002	780
2003	740
2004	800
2005	750
2006	790
2007	1,090
2008	900
2009	870
2010	910
2011*	890

Upland Cotton Plantings - (Thousand Acres)

Year	Plantings (Thousand Acres)
2002	940
2003	810
2004	730
2005	815
2006	870
2007	500
2008	430
2009	375
2010	550
2011*	750

Soybean Plantings - (Thousand Acres)

Year	Plantings (Thousand Acres)
2002	1,370
2003	1,450
2004	1,530
2005	1,490
2006	1,370
2007	1,440
2008	1,690
2009	1,800
2010	1,580
2011*	1,490

Winter Wheat Plantings - (Thousand Acres)

Year	Plantings (Thousand Acres)
2002	800
2003	530
2004	600
2005	560
2006	560
2007	630
2008	820
2009	700
2010	500
2011*	700

*Planting intentions as of March 1. Actual plantings may change based on weather, input costs, commodity prices, etc. and will be reflected in the Acreage report released June 30.

PROSPECTIVE PLANTINGS

Crops	North Carolina			United States		
	2010	2011	Percent	2010	2011	Percent
	Thousand Acres	Intentions	Change	Thousand Acres	Intentions	Change
Barley ¹	20	24	+20	2,872	2,952	+3
Com: All	910	890	-2	88,152	92,179	+5
Cotton: Upland ²	550	750	+36	10,973	12,566	+15
Hay: All ³	965	940	-3	59,862	58,973	-1
Oats	40	40	0	3,138	2,839	-10
Peanuts	87	81	-7	1,288	1,237	-4
Soybeans	1,580	1,490	-6	77,404	76,609	-1
Sweet Potatoes	55.0	60.0	+9	119.8	126.7	+6
Tobacco: Burley ⁴	2.3	2.3	0	97.6	94.8	-3
Tobacco: Flue-cured ⁵	166.0	168.0	+1	210.9	213.0	+1
Wheat: Winter ⁶	500	700	+40	53,603	58,021	+9

¹ Includes acreage planted in preceding fall. ² U.S. includes Upland and American-Pima cotton. ³ Data for hay and tobacco represent harvested acres. ⁴ U.S. includes Winter, Durum and Other Spring wheat.

2010 Planted Acres and Percent Total for Select Commodities*
(Thousand Acres)

2011 Planted Acres and Percent Total for Select Commodities*
(Thousand Acres)

*Tobacco data represents harvested acres.

North Carolina Prospective Plantings (Cont'd)

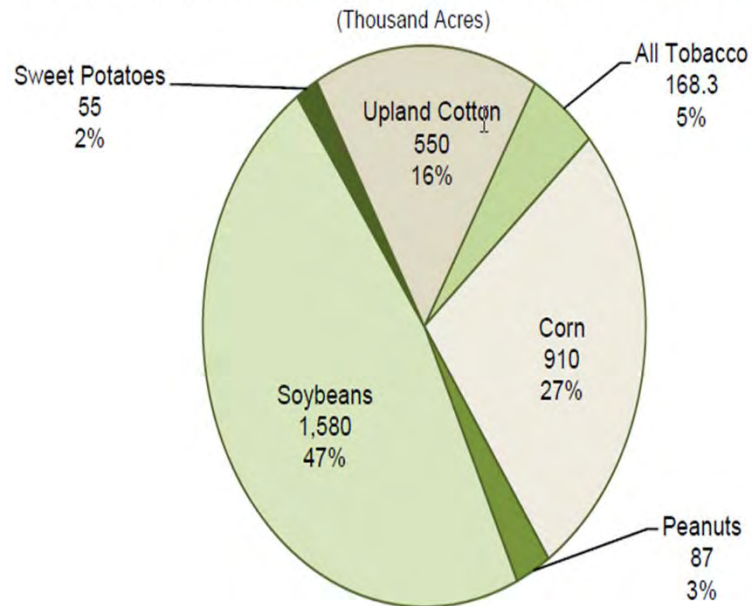
- **Corn plantings are expected to total 890,000 acres in 2011, down 2% from 2010**
- **Cotton growers intend to plant 750,000 acres in 2011, 36% higher than last year**
- **Flue-cured tobacco growers expect to harvest 168,000 acres in 2011, up 1% from 2010**
- **Burley tobacco growers expect to harvest 2,300 acres in 2011, unchanged from 2010**
- **Soybean plantings, at 1.49 million acres, are expected to decrease 6% from 2010**

North Carolina Prospective Plantings (Cont'd)

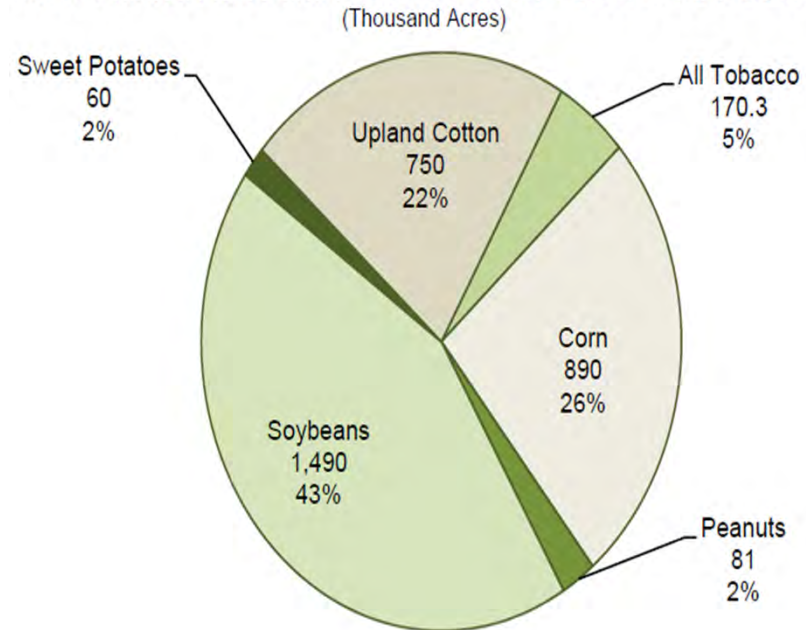
- Peanut growers intend to plant 81,000 acres in 2011, down 7% from the planted acreage in 2010
- Sweet potato growers intend to plant 60,000 acres, up 5,000 acres from last year
- Hay producers expect to cut 840,000 acres in 2011, down 3% from 2010
- Winter wheat plantings totaled 700,000 acres, up 40% from last year

North Carolina Prospective Plantings (Cont'd)

2010 Planted Acres and Percent Total for Select Commodities *




2011 Planted Acres and Percent Total for Select Commodities *




North Carolina Acreage

- Released June 30, 2011



United States Department of Agriculture
National Agricultural Statistics Service
North Carolina Field Office

News Release



Cooperating with the North Carolina Department of Agriculture and Consumer Services
PO Box 27767 - Raleigh, NC 27611 - 919-856-4394
E-mail: ncagets@ncagr.gov June 30, 2011

COTTON ACRES UP SIGNIFICANTLY FROM LAST YEAR

- Corn plantings are expected to total 900,000 acres in 2011, down 10,000 from 2010.
- Cotton growers intend to plant 760,000 acres in 2011, 38% more than 2010 and the most since 2006.
- Flue-cured Tobacco growers expect to harvest 172,000 acres in 2011, 6,000 more than last year.
- Burley Tobacco growers expect to harvest 2,100 acres in 2011, tied with 1921 for the fewest acres on record.
- Soybean plantings, at 1.42 million acres, are expected to decrease 10% from 2010.
- Peanut growers intend to plant 77,000 acres in 2011, down from 87,000 last year.
- Sweet Potato growers intend to plant 65,000 acres, up 10,000 acres from 2010 and the most since 1944.
- Hay producers expect to harvest 805,000 acres in 2011, down from 865,000 in 2010.
- Winter Wheat plantings totaled 700,000 acres, up 40% from the 500,000 planted the previous year.

Corn for Grain - (Thousand Acres)

Upland Cotton - (Thousand Acres)

Soybeans - (Thousand Acres)

Winter Wheat - (Thousand Acres)

* Harvested Acres released on August 11, 2011

Peanuts - (Thousand Acres)

Sweet Potatoes - (Thousand Acres)

CROP ACREAGES, JUNE 1

Crops	Planted		Harvested		Planted Percent Change
	2010	2011	2010	2011	
	Thousand Acres		Thousand Acres		%
North Carolina					
Barley ¹	20	27	15	18	+36
Corn for Grain	910	900	840	830	-1
Cotton: Upland	550	760	545	-	+38
Hay: All	-	-	865	805	-7
Hay: Alfalfa	-	-	5	5	0
Hay: Other	-	-	860	800	-7
Oats ¹	40	45	15	15	+13
Peanuts	87	77	86	76	-11
Soybeans for Beans	1,580	1,420	1,550	1,390	-10
Sweet Potatoes	55	65	54	64	+18
Tobacco: All	-	-	168.3	174.1	+3
Tobacco: Flue-cured	-	-	166.0	172.0	+4
Tobacco: Burley	-	-	2.3	2.1	-9
Wheat: Winter ¹	500	700	380	640	+40
United States					
Barley ¹	2,872	2,815	2,455	2,480	-2
Corn for Grain	88,192	92,282	81,446	84,888	+5
Cotton: All ¹	10,974	13,725	10,695	-	+25
Hay: All	-	-	59,862	57,605	-4
Hay: Alfalfa	-	-	19,956	19,329	-3
Hay: Other	-	-	39,906	38,276	-4
Oats ¹	3,138	2,587	1,263	934	-18
Peanuts	1,288	1,152	1,259	1,122	-11
Soybeans for Beans	77,404	75,208	76,616	74,258	-3
Sweet Potatoes	120	133	117	126	+11
Tobacco: All	-	-	337.5	336.1	-0
Tobacco: Flue-cured	-	-	210.9	216.0	+2
Tobacco: Burley	-	-	97.6	90.0	-8
Wheat: All ¹	53,603	56,433	47,637	47,174	+5

¹ Includes area planted in preceding fall. ² Released on August 11, 2011. ³ US includes Upland and American Pima. ⁴ US includes Winter, Durum and Other Spring wheat.

North Carolina Acreage (Cont'd)

- Corn plantings are expected to total 900,000 acres in 2011, down 10,000 from 2010
- Cotton growers intend to plant 760,000 acres in 2011, 38% more than 2010 and the most since 2006
- Flue-cured Tobacco growers expect to harvest 172,000 acres in 2011, 6,000 more than last year
- Burley Tobacco growers expect to harvest 2,100 acres in 2011, tied with 1921 for the fewest acres on record
- Soybean plantings, at 1.42 million acres, are expected to decrease 10% from 2010

North Carolina Acreage (Cont'd)

- Peanut growers intend to plant 77,000 acres in 2011, down from 87,000 last year
- Sweet Potato growers intend to plant 65,000 acres, up 10,000 acres from 2010 and the most since 1944
- Hay producers expect to harvest 805,000 acres in 2011, down from 865,000 in 2010
- Winter Wheat plantings totaled 700,000 acres, up 40% from the 500,000 planted the previous year

North Carolina Acreage (Cont'd)

CROP ACREAGES, JUNE 1					
Crops	Planted		Harvested		Planted
	2010	2011	2010	2011	Percent Change
	<i>Thousand Acres</i>		<i>Thousand Acres</i>		<i>+/-</i>
North Carolina					
Barley ¹	20	27	15	18	+35
Corn for Grain	910	900	840	830	-1
Cotton: Upland	550	760	545	²	+38
Hay: All	-	-	865	805	-7
Hay: Alfalfa	-	-	5	5	0
Hay: Other	-	-	860	800	-7
Oats ¹	40	45	15	15	+13
Peanuts	87	77	86	76	-11
Soybeans for Beans	1,580	1,420	1,550	1,390	-10
Sweet Potatoes	55	65	54	64	+18
Tobacco: All	-	-	168.3	174.1	+3
Tobacco: Flue-cured	-	-	166.0	172.0	+4
Tobacco: Burley	-	-	2.3	2.1	-9
Wheat: Winter ¹⁴	500	700	380	640	+40

March vs. June Comparison

- Corn plantings went up 10,000 acres
- Cotton plantings went up 10,000 acres (most since 2006)
- Flue-cured tobacco expected harvest up 4,000 acres
- Burley tobacco expected harvest down 200 acres -tied for fewest on record (1921)
- Soybean plantings down 70,000 acres
- Peanut plantings down 4,000 acres

March vs. June Comparison (cont'd)

- Sweet Potato planting up 5,000 acres (most since 1944)
- Hay expected harvest down 35,000 acres
- Winter Wheat plantings stated the same (up 200,000 acres from 2010)

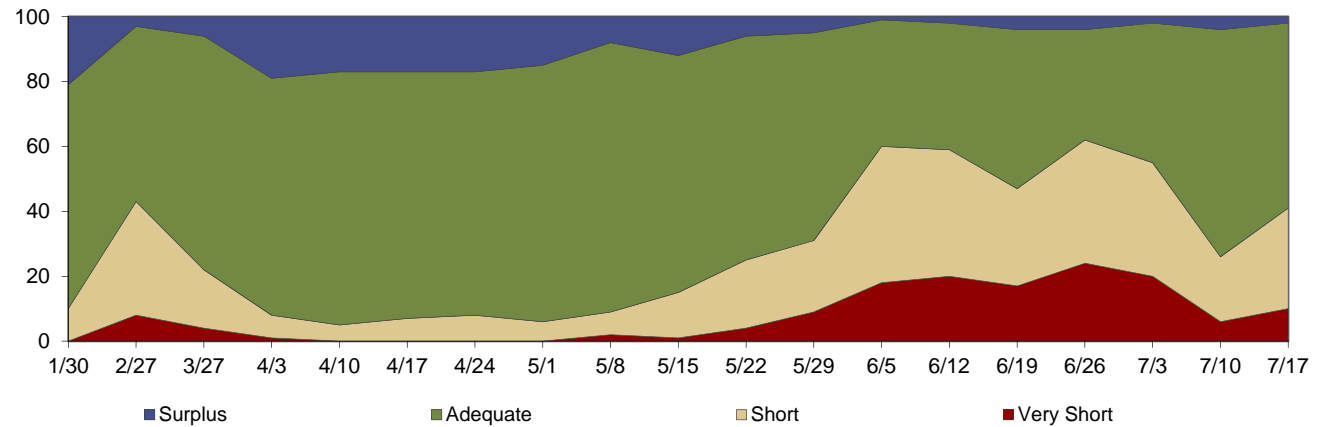


Soil Moisture

Statewide Soil Moisture

SOIL MOISTURE CHART

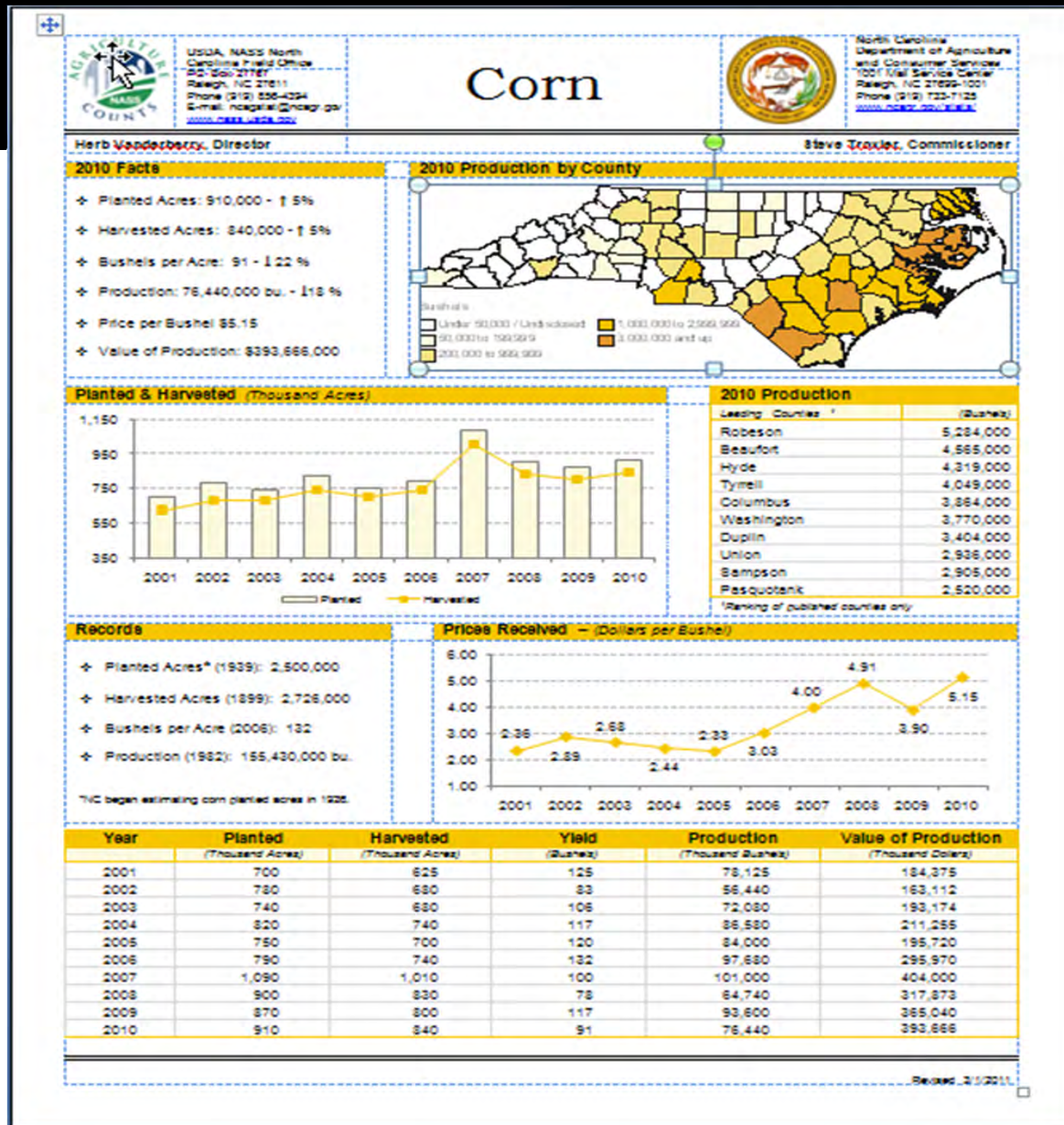
	<u>Very Short</u>	<u>Short</u>	<u>Adequate</u>	<u>Surplus</u>
1/30	0	10	69	21
2/27	8	35	54	3
3/27	4	18	72	6
4/3	1	7	73	19
4/10	0	5	78	17
4/17	0	7	76	17
4/24	0	8	75	17
5/1	0	6	79	15
5/8	2	7	83	8
5/15	1	14	73	12
5/22	4	21	69	6
5/29	9	22	64	5
6/5	18	42	39	1
6/12	20	39	39	2
6/19	17	30	49	4
6/26	24	38	34	4
7/3	20	35	43	2
7/10	6	20	70	4
7/17	10	31	57	2





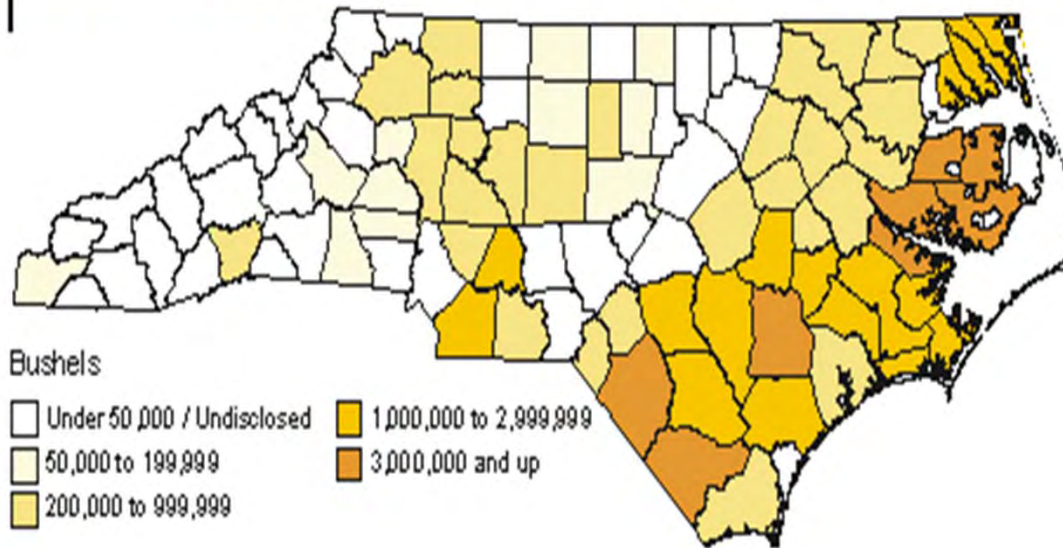
Corn

Corn Facts


Revised 3/1/2011

Corn (Production by County)

2010 Production by County



Corn (Leading Counties in NC)

2010 Production	
Leading Counties ¹	(Bushels)
Robeson	5,284,000
Beaufort	4,565,000
Hyde	4,319,000
Tyrrell	4,049,000
Columbus	3,864,000
Washington	3,770,000
Duplin	3,404,000
Union	2,936,000
Sampson	2,905,000
Pasquotank	2,520,000

¹Ranking of published counties only

Corn (Value of Production)

- Ranked as #8 cash receipt crop in NC

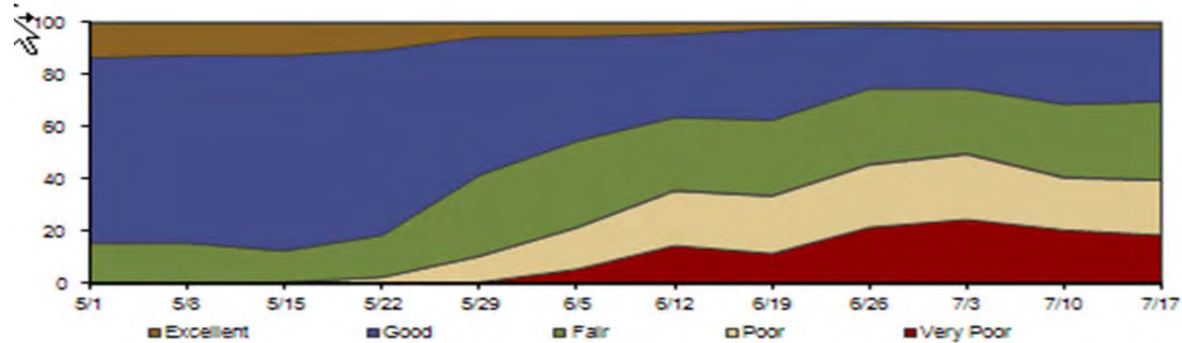
Year	Planted (Thousand Acres)	Harvested (Thousand Acres)	Yield (Bushels)	Production (Thousand Bushels)	Value of Production (Thousand Dollars)
2001	700	625	125	78,125	184,375
2002	780	680	83	56,440	163,112
2003	740	680	106	72,080	193,174
2004	820	740	117	86,580	211,255
2005	750	700	120	84,000	195,720
2006	790	740	132	97,680	295,970
2007	1,090	1,010	100	101,000	404,000
2008	900	830	78	64,740	317,873
2009	870	800	117	93,600	365,040
2010	910	840	91	76,440	393,666

Corn Condition



CROP CONDITION- CORN

	<u>Very Poor</u>	<u>Poor</u>	<u>Fair</u>	<u>Good</u>	<u>Excellent</u>
5/1	0	1	15	71	13
5/8	0	0	16	72	12
5/15	0	1	12	75	12
5/22	0	3	16	71	10
5/29	1	10	31	53	5
6/5	6	16	33	40	5
6/12	15	21	28	32	4
6/19	12	22	29	35	2
6/26	22	24	29	24	1
7/3	25	25	25	23	2
7/10	21	20	28	29	2
7/17	19	21	30	28	2





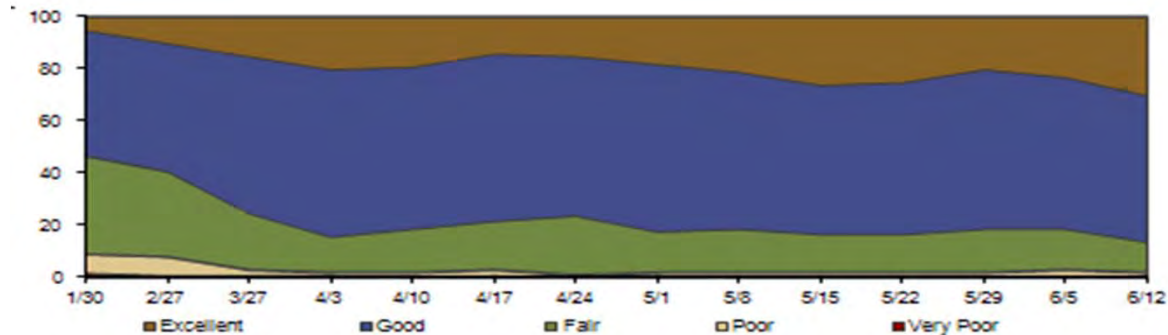
Wheat

Wheat Condition

CROP CONDITION- WHEAT

	<u>Very Poor</u>	<u>Poor</u>	<u>Fair</u>	<u>Good</u>	<u>Excellent</u>
1/30	1 2	7	38	48	5
2/27	1	7	33	49	10
3/27	1	2	22	60	15
4/3	1	1	14	64	20
4/10	0	2	17	62	19
4/17	1	2	19	64	14
4/24	0	1	23	61	15
5/1	1	1	16	64	18
5/8	0	2	17	60	21
5/15	0	2	15	57	26
5/22	0	2	15	58	25
5/29	0	2	17	61	20
6/5	0	3	16	58	23
6/12	1	1	12	56	30

* Record breaking wheat yield of 68 bu./acre



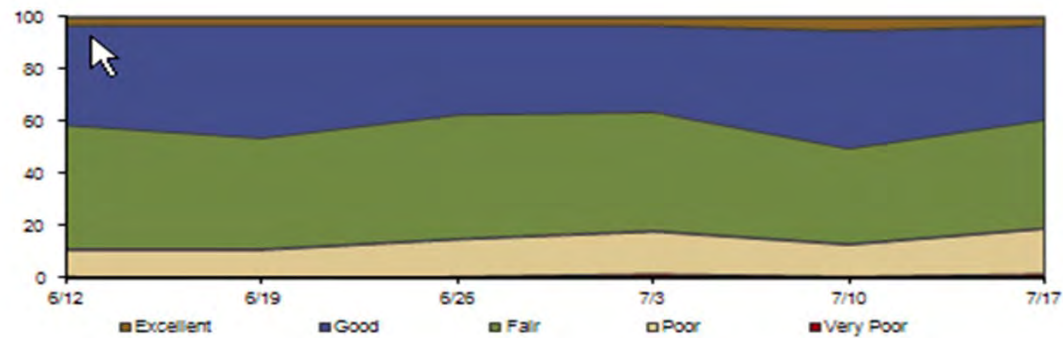


Soybeans

Soybean Condition

CROP CONDITION- SOYBEANS

	<u>Very Poor</u>	<u>Poor</u>	<u>Fair</u>	<u>Good</u>	<u>Excellent</u>
6/12	1	10	48	38	3
6/19	0	11	43	43	3
6/26	1	14	48	34	3
7/3	2	16	46	33	3
7/10	1	12	37	45	5
7/17	2	17	42	36	3



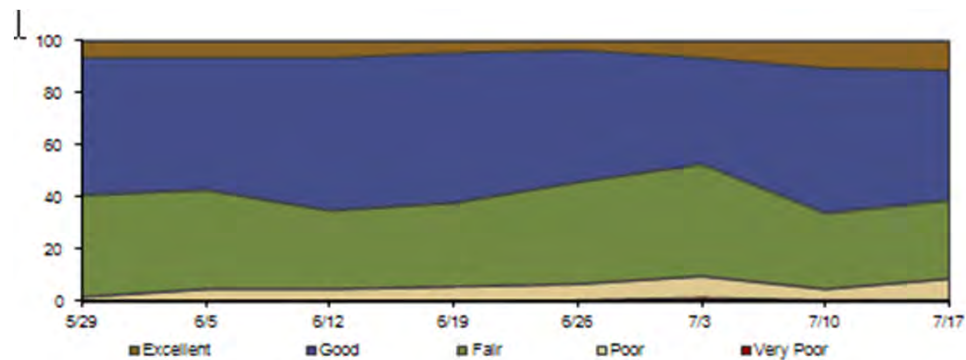



Cotton

Cotton Condition

CROP CONDITION- COTTON

	<u>Very Poor</u>	<u>Poor</u>	<u>Fair</u>	<u>Good</u>	<u>Excellent</u>
5/29	0	2	39	53	6
6/5	1	4	38	51	6
6/12	0	5	30	59	6
6/19	0	6	32	58	4
6/26	1	6	39	51	3
7/3	2	8	43	41	6
7/10	1	4	29	56	10
7/17	1	8	30	50	11



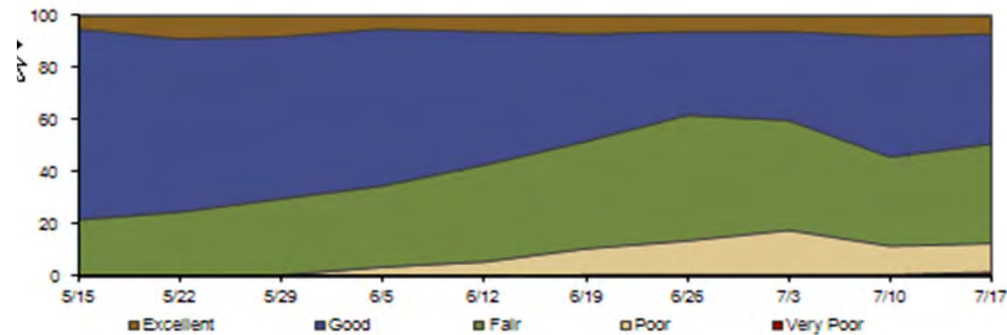


Flue-Cured Tobacco

Flue-Cured Tobacco Condition

CROP CONDITION- TOBACCO (FLUE-CURED)

	<u>Very Poor</u>	<u>Poor</u>	<u>Fair</u>	<u>Good</u>	<u>Excellent</u>
5/15	0	0	22	73	5
5/22	0	0	25	66	9
5/29	0	1	29	62	8
6/5	0	4	31	60	5
6/12	0	6	37	51	6
6/19	1	10	41	41	7
6/26	1	13	48	32	6
7/3	1	17	42	34	6
7/10	1	11	34	46	8
7/17	2	11	38	42	7





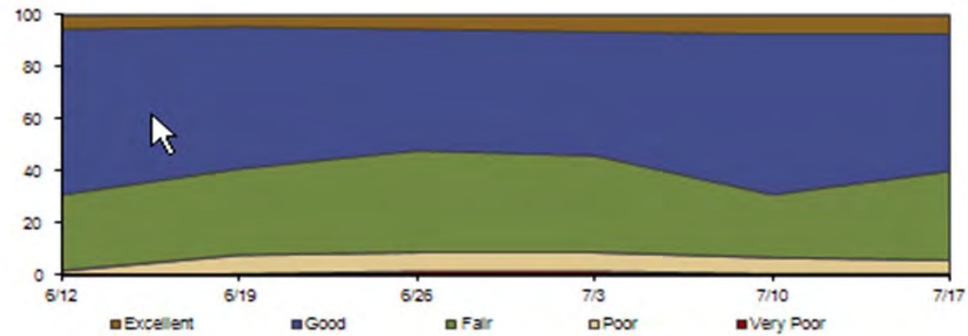
Peanuts

Peanut Condition

I

CROP CONDITION- PEANUTS

	<u>Very Poor</u>	<u>Poor</u>	<u>Fair</u>	<u>Good</u>	<u>Excellent</u>
6/12	0	2	29	64	5
6/19	1	7	33	55	4
6/26	2	7	39	47	5
7/3	2	7	37	48	6
7/10	1	6	24	62	7
7/17	1	5	34	53	7





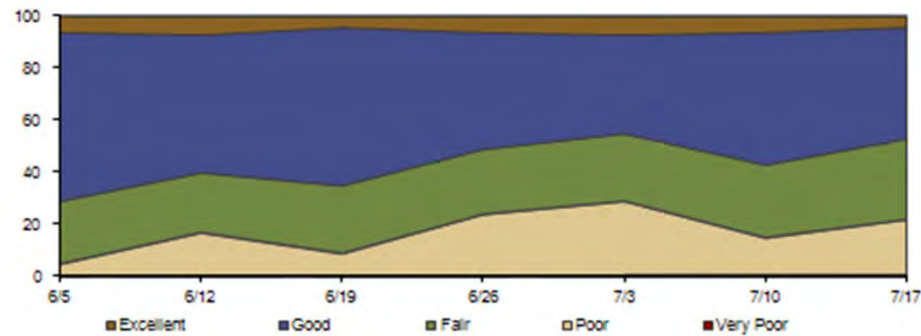
Hay

Hay Condition

CROP CONDITION- HAY

I

	<u>Very Poor</u>	<u>Poor</u>	<u>Fair</u>	<u>Good</u>	<u>Excellent</u>
6/5	0	5	24	65	6
6/12	1	16	23	53	7
6/19	0	9	26	61	4
6/26	0	24	25	45	6
7/3	1	28	26	38	7
7/10	1	14	28	51	6
7/17	1	21	31	43	4



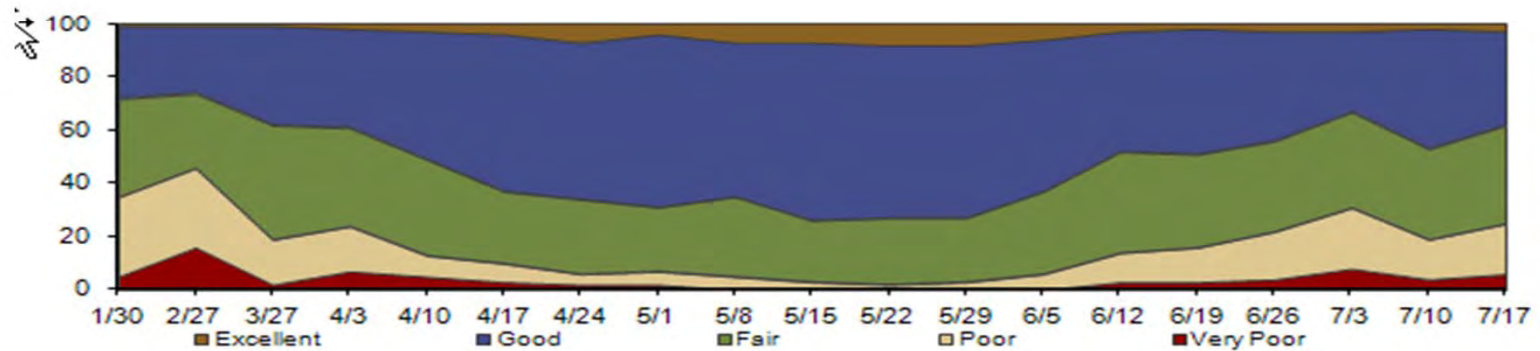


Pasture

Pasture Condition

CROP CONDITION - PASTURE

	<u>Very Poor</u>	<u>Poor</u>	<u>Fair</u>	<u>Good</u>	<u>Excellent</u>
1/30	5	30	37	27	1
2/27	16	30	28	25	1
3/27	2	17	43	37	1
4/3	7	17	37	37	2
4/10	5	8	36	48	3
4/17	3	7	27	59	4
4/24	2	4	28	59	7
5/1	2	5	24	65	4
5/8	0	5	30	58	7
5/15	0	3	23	67	7
5/22	0	2	25	65	8
5/29	0	3	24	65	8
6/5	0	6	31	57	6
6/12	3	11	38	45	3
6/19	3	13	35	47	2
6/26	4	18	34	41	3
7/3	8	23	36	30	3
7/10	4	15	34	45	2
7/17	6	19	37	35	3



Websites of Interest

Other North Carolina Agricultural Statistics:

<http://www.ncagr.gov/stats/index.htm>

North Carolina Crop Weather:

<http://www.ncagr.gov/stats/weather/weather.htm>

Crop Progress and Condition Animated Maps:

<http://www.nass.usda.gov/research/cpcs.htm>

Prospective Plantings:

<http://www.ncagr.gov/stats/release/CropRelease03.pdf>

Acreage:

<http://www.ncagr.gov/stats/release/CropRelease06.pdf>

Upcoming Release Dates

- **August 11, 2011 (Crop Production)**
 - **First row crop yield and production forecast for the season**
- **September 12, 2011 (Crop Production)**
- **October 12, 2011 (Crop Production)**
- **November 9, 2011 (Crop Production)**
- **December 9, 2011 (Crop production)**

Contact Information

- Torey Lawrence
torey_lawrence@nass.usda.gov
(919) 733-6333 x 302